



# ONWARDS & UPWARDS

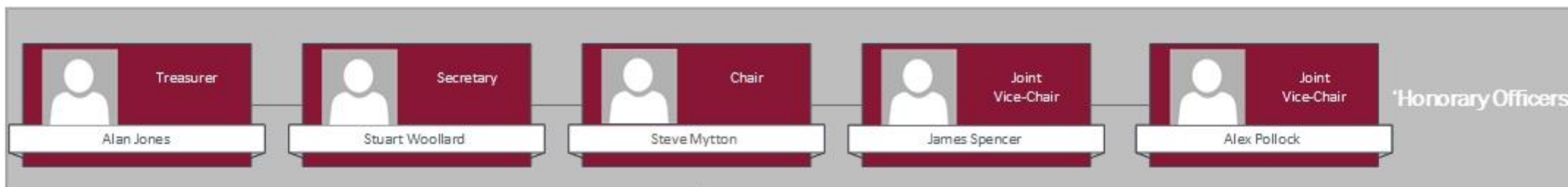
Let's Work Together

**ANNUAL GENERAL MEETING (AGM)**

WEDNESDAY 23 MARCH 2022

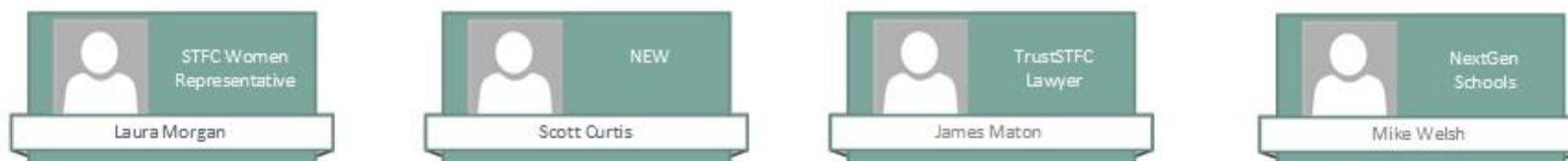


- 7:00pm** Introduction and Apologies (Cliff Ponting)
- 7:05pm** Trust Board Elections and Re-Elections (Cliff Ponting)
- 7:15pm** Accounts for 2020/21 (Alan Jones)
- 7:15pm** Independent Assessor Vote (Cliff Ponting)
- 7:20pm** Chairman report and General Updates (Steve Mytton)
- 7:25pm** STFC Official Supporters Club (Hannah Clinch)
- 7:40pm** Goals for the year ahead (James Spencer/Steve Mytton)
- 8:00pm** County Ground Update (Rob Angus/Steve Mytton)
- 8:20pm** Public Q&A (All)
- 8:30pm** Thank You's and Informal Q&A (All)
- 9:00pm** Event Close



TrustSTFC Board Officers

TrustSTFC Honorary President



TrustSTFC Representatives on The County Ground Stadium Custodians Ltd – 2022/2023





**ONWARDS & UPWARDS**

Let's Work Together

**FINANCIAL UPDATE**

In the year up to 31st August 2021:

Swindon Town Community Mutual Ltd (TrustSTFC) made a surplus of £34,163, and finished the year with a bank balance of £88,496.

Copies of the Trust's Accounts for 2020/21 are available on the Trust website for members to review.

[www.truststfc.tv/annual-accounts](http://www.truststfc.tv/annual-accounts)



TRUSTSTFC.TV

HOME RED ARMY FUND LEARN ABOUT STFC NEWSROOM **ANNUAL ACCOUNTS** TIMELINE TRUST BOARD TRUST FAQs CONTACT US

HOME > ANNUAL ACCOUNTS

**ANNUAL ACCOUNTS**

SD Accounts and The FCA Watch later Share

Accounts & The FCA  
Compliance is key!

SD

**SD**

member  
2018/19

TrustSTFC, or its registered name 'Swindon Town Community Mutual', is regulated by the Financial Conduct Authority (FCA), and we follow rules laid down by Supporters Direct (SD), which are again registered with the FCA. We are a Community Benefit Society (CBS).



## **Independent Assessor Resolution:**

- The Trust's draft accounts had been audited by Lionel Morgan and accepted as a true record of the Trust's financial activities.
- The Trust can “disapply” the need for a full audit of its accounts and use the services of a suitably qualified Independent Assessor to review the Annual Accounts.
- In order to continue to use the process of an Independent Assessor rather than a full audit a resolution must be passed at the AGM to enable this process.
- That TrustSTFC appoint a suitably qualified Auditor/Independent Assessor in accordance with the Co-operative and Community Benefits Society Act 2014 s.385 of the Companies Act 1985.



- **February 2021** - "On the Brink" and Open Letter
- **March** - Axis response to Open Letter
- **April** - FA Charges and response, comms ceased, #FanPower, membership growth and more legal proceedings, Clem Morfuni attends Trust Board meeting to answer questions
- **May** - More legals, #NoMoney campaign, Lots of media, EFL meeting
- **June** - Fan Led Review with Tracy Crouch MP and her panel
- **July** – Yet more legals with Trust providing supporting statements
- **21st July 2021 – Victory in court, everything changes overnight**
- **August** – Trust and Club sign Memorandum of Understanding (MOU)
- **September** – First ever Advisory Board is held with Club, Trust and Supporters Club representatives
- **September** – Next Generation of Town fans campaign starts with Club and Community Foundation
- **September** – Board agree to sponsor Swindon Town Women
- **November** – County Ground presentation to Swindon Borough Councillors
- **December** – Fan engagement email address launched, supported by the Trust
- **9th December 2021** – The County Ground Stadium Custodians Ltd is incorporated
- **January 2022** – Supporting comments submitted to Fan Engagement Index
- **January** – Board extends sponsorship of STFC Women with quarterly support
- **January** – County Ground commercial revaluation exercise completes, funded by TrustSTFC
- **February** - Oakwood Corporate Services engaged for company secretarial duties on TCGSTC Ltd
- **February** – Announcement of March AGM along with new and improved Board elections process
- **February** – Autism Packs funded by TrustSTFC and FSA



^ Great work by Keith Coatsworth and Caroline from STFC on Sensory packs



^ Thanks to anonymous member who donated a shirt – Baillie from STFC arranged for the players to sign it and we gave to local Charity BEST for fundraising



< Great work again by Keith on scarf design and thanks also to various board members for giving up matchday time to hand them out

Thanks to members who donated scarves for local children



'Raise your scarf' at the Oldham match, it's a start but we can do better!





ONWARDS & UPWARDS  
Let's Work Together

2017 AGM REMINDER



Swindon Advertiser







**STFC  
OFFICIAL  
SUPPORTERS  
CLUB**



**ONWARDS & UPWARDS**  
Let's Work Together

# OFFICIAL SUPPORTERS CLUB COMMITTEE



**Hannah Clinch**  
Acting Chair / Events



**Chris Kyle**  
Secretary / Membership



**Tim Keen**  
Treasurer



**Anthony Reeves**  
Social Media



**Mark Thatcher**  
Website



**Stephen Richmond**  
Merchandise



**ONWARDS & UPWARDS**  
Let's Work Together

## MISSION AND VISION

Our mission is to provide both direct and indirect benefits to members and the football club's wider fan base, making supporting STFC as enjoyable as possible. We will do this by putting the fans at the centre of our decision-making process.

Our vision is a positive and engaging atmosphere for all STFC supporters, resulting in:

- an increasingly engaged fan base
- a positive match-day atmosphere
- increasing Club membership volumes



# ONWARDS & UPWARDS

Let's Work Together

# WHAT HAVE WE DONE THIS YEAR? (SEPT-NOV)





# ONWARDS & UPWARDS

Let's Work Together

# WHAT HAVE WE DONE THIS YEAR? (DEC-MAR)





**ONWARDS & UPWARDS**  
Let's Work Together

**WHAT'S COMING UP**



**11 SENIOR MASCOT** packages up for GRABS!

**APPLY NOW!**

The STFC Official Supporters Club are delighted to have purchased 11 senior mascot packages for our final home game of the season, against Leyton Orient.

All submissions will be reviewed by our panel of judges, and winners will be notified by 15<sup>th</sup> February, 2020.

**NOMINATE YOUR OVER 60 SUPER-FAN!**

Applications close 1st February

Apply online at: [stfc-osc.com/senior-mascots](http://stfc-osc.com/senior-mascots)





- Becoming an OSC member costs just £5 per season
- More members results in a more widely represented fanbase
- Benefits include:
  - 5% discount in the club shop (non-sale items)
  - Discounted away travel through SAS travel
  - Free entry into members hospitality draw
  - Free entry into Christmas hamper draw
  - Member exclusives for live events (e.g. discounts, priority booking, freebies)
- Sign up online ([stfc-osc.com](http://stfc-osc.com)) or visit our table in the Legends Lounge on a matchday



ONWARDS & UPWARDS  
Let's Work Together

LET US KNOW WHAT YOU WANT TO SEE



[admin@stfc-osc.com](mailto:admin@stfc-osc.com)



Swindon Town Supporters Club



@STFCSupClub



STFC OSC



STFC OSC, PO Box 4217, Swindon, SN2 9LH





**ONWARDS & UPWARDS**  
Let's Work Together

**VISON REMINDER FROM 2015**

**5 YEAR STFC VISION**

**SUPPORTERS TRUST**

**SUCCESS ON THE PITCH**

**FAMILY FOCUSED!**

**FANTASTIC PRE-MATCH ENTERTAINMENT!**

**CELEBRATING HISTORY**

*raise the roof!*

**FULL STADIUM OF PASSIONATE FANS**  
(all members of the Trust)

**10% PROTECTED STAKE IN CLUB**

**WIFI FREE**  
TECHNOLOGICALLY ADVANCED AND IMPROVED STADIUM FACILITIES

**READY FOR ANYTHING!**  
EMERGENCY PLAN

**STRONG CLUB FINANCES**

**STRONG TWO-WAY CONNECTION WITH SUPPORTERS**

**'COOL' BRAND CLOTHING ETC**

**SUPPORTERS COUNCIL WORKING WITH CLUB**

**LOCAL COMPANIES ON-BOARD**  
npower, HONDA, ZURICH, Nationwide

Integrated with local youth football teams and local schools - the next generation of players and supporters!



1. Communicate with our members better than ever before through media, website articles and newsletters
2. Find new ways to attract and reward our 'Trust Legends' membership
3. Be even more family and inclusion focused, working with STFC and the Foundation on Schools/Youth tickets
4. Support the NextGen of Swindon Town fans with new ideas and initiatives
5. Help to generate a full stadium of passionate fans, by supporting fan engagement initiatives
6. Get more people and companies interested in STFC and Swindon Town Women FC
7. Continue participation and engagement with the club via the Fan Advisory Board
8. Work on new income streams that help ensure strong club finances & hopefully success on the pitch!
9. Complete the County Ground purchase and provide insight and ideas for a future stadium vision
10. New website and consolidate TrustSTFC.TV, RAF, LearnAboutSTFC and County Ground shares in one place
11. Run a successful national and international 'County Ground' shares membership campaign
12. Ensure we continue to celebrate our fantastic club history



**SWINDON TOWN LEAGUE CUP WINNERS**  
**50 YEARS ANNIVERSARY**  
MARCH 15 1969

15TH MARCH 1969 - WEMBLEY STADIUM - ATTENDANCE 98,189

**THE ROAD TO THE 1969 LEAGUE CUP**

**ARSENAL 1 SWINDON TOWN 3**

**15 TOWN PLAYERS**

DOWNSBOROUGH THOMAS  
TROLLOPE BUTLER  
BURROWS HARLAND  
HEATH SMART SMITH  
NOBLE ROGERS PENMAN  
DAWSON BLICK JONES

**23 GOALS SCORED!**

ROGERS  
SMART  
NOBLE  
SMITH  
HARLAND  
PENMAN  
... and one own goal!

**331,947 FANS**  
**1,170 WATCHED MINUTES**  
**IN 12 MATCHES**  
**over 7 ROUNDS**

**3 EXTRA TIME PERIODS**  
**463 REPLAYS**  
**5 BOOKINGS**

**THE TEAMS**

**SWINDON TOWN**  
1 Peter Downsborough  
2 Red Thomas  
3 John Trollope  
4 Joe Butler  
5 Frank Burrows  
6 Stan Harland  
7 Dan Heath  
8 Roger Smart 35'  
9 John Smith 77'  
10 Peter Noble  
11 Dan Rogers 104', 119'  
Substitute:  
12 Willie Penman 77'  
Manager:  
Danny Williams

**ARSENAL**  
1 Bob Wilson  
2 Peter Storey  
3 Bob McNab  
4 Frank McLintock  
5 Ian Ure  
6 Peter Simpson 71'  
7 John Rodford  
8 Jan Samuels  
9 David Court  
10 Bobby Gould 86'  
11 George Armstrong  
Substitute:  
12 George Graham 71'  
Manager:  
Bertie Mee

**TORQUAY** HOME 2-1 (SMART, NOBLE)  
**BRADFORD** AWAY 1-1 (SMART)  
HOME 4-3 (SMITH, ROGERS (PEN), SMART, NOBLE)  
**BLACKBURN** AWAY 1-0 (ROGERS)  
**COVENTRY** AWAY 2-2 (ROGERS, SMART)  
HOME 3-0 (ROGERS, SMART, PENMAN)  
**DERBY** AWAY 0-0  
HOME 1-0 (ROGERS)  
**BURNLEY** AWAY 2-1 (HARLAND, NOBLE)  
HOME 1-2 (SMITH)  
NEUTRAL 3-2 (SMITH, BELLAMY, D.G. NOBLE)  
**ARSENAL** 3-1 WEMBLEY WIN (SMART, ROGERS 2)

**THE GREATEST achievement IN SWINDON TOWN HISTORY!**

**SWINDON TOWN**  
**ANGLO-ITALIAN CUP WINNERS**  
**50 YEARS ANNIVERSARY**  
TWENTY EIGHTH MAY 1970

**THE STORY OF THE 1970 ANGLO-ITALIAN CUP**

**THE ANGLO-ITALIAN CUP WINNERS' CUP FINAL vs AS ROMA**  
AFTER THE 1969 LEAGUE CUP VICTORY OVER ARSENAL, SWINDON WERE ENTERED THE ANGLO-ITALIAN LEAGUE CUP WINNERS' CUP, VERSUS THE WINNERS OF THE COPPA ITALIA, AS ROMA. DRAWN AWAY FOR THE FIRST LEG OF THE COMPETITION, AROUND ONE HUNDRED TOWN FANS MADE THE JOURNEY TO SUPPORT THEIR TEAM, WHO LOST NARROWLY BY A 2-1 SCORELINE. TWO WEEKS LATER, THE SECOND LEG AT THE COUNTY GROUND PROVED TO BE AN ENTIRELY DIFFERENT AFFAIR. TOWN WON 4-0 ON THE NIGHT, 6-2 ON AGGREGATE. SO IMPRESSED WERE THE ITALIAN FA, THAT THEY WENT ABOUT ORGANISING THE ANGLO-ITALIAN CUP FOR LATER THE SAME SEASON.

**AWAY 1-2** (NOBLE 52')  
WEDS 27 AUGUST 1969 ATTENDANCE: 40,000

**HOME 4-0** (HORSFIELD 15', 70', 89', ROGERS 72')  
WEDS 10 SEPTEMBER 1969 ATTENDANCE: 14,976

**THE ANGLO-ITALIAN CUP TOURNAMENT CONSISTED OF TWELVE TEAMS, SIX ENGLISH AND SIX ITALIAN, AND THE TEAM WITH THE BEST RECORD FROM EACH COUNTRY WOULD QUALIFY. SWINDON WERE DRAWN IN GROUP 1 WITH SHEFFIELD WEDNESDAY, JUVENTUS AND NAPOLI. THEY STARTED BRIGHTLY, HAMMERING JUVENTUS 4-0 AT HOME IN THEIR FIRST MATCH, AND THEN TWO WEEKS LATER WON AGAIN 1-0 IN ITALY.**

**HOME 4-0** (NOBLE 60', HORSFIELD 67', 85', HARLAND 89')  
SAT 2 MAY 1970 ATTENDANCE: 12,879

**AWAY 1-0** (NOBLE 23')  
SAT 16 MAY 1970 ATTENDANCE: 5,000

**SSC NAPOLI**  
THE TOURNAMENT WAS PLAYED THROUGHOUT MAY AND DURING THIS SAME PERIOD TOWN ALSO FACED NAPOLI TWICE, HOME AND AWAY. GOING DOWN 2-1 AT HOME THEY SURPRISED AGAIN WITH ANOTHER WIN ON ITALIAN SOIL. THIS TIME THANKS TO A GOAL BY DON ROGERS. SWINDON PROGRESSED TO THE FINAL STAGE AT THE EXPENSE OF MIDDLESBROUGH AND WOLVES. NAPOLI ALSO QUALIFIED, HELPED BY A 5-1 HOME WIN OVER SHEFFIELD WEDNESDAY.

**HOME 1-2** (SMITH 50')  
SAT 9 MAY 1970 ATTENDANCE: 10,221

**AWAY 1-0** (ROGERS 60')  
SAT 23 MAY 1970 ATTENDANCE: 30,000

**THE ANGLO-ITALIAN CUP FINAL vs SSC NAPOLI**  
SWINDON BECAME WINNERS OF THE INAUGURAL ANGLO-ITALIAN CUP, BEATING NAPOLI 3-0 IN THE FINAL, HELD IN THE STADIO SAN PAOLO, NAPLES. TOWN PRODUCED A FINE DISPLAY IN THE FINAL WITH GOALS COMING FROM PETER NOBLE AND ARTHUR HORSFIELD. THIS INCENSED THE ITALIAN FANS SO MUCH, THEY STARTED TO RIOT - RIPPING SEATS FROM THE GROUND AND HURLING THEM ONTO THE PITCH. THOUGH THE MATCH WAS ABANDONED AFTER 79 MINUTES, THE TROPHY WAS AWARDED TO SWINDON.

**AWAY 3-0** (NOBLE 24', 58', HORSFIELD 63')  
THURS 28 MAY 1970 ATTENDANCE: 55,000

**"We prepared seriously because we meant to win." - Peter Noble**

What else can we do?



Let's work together and have our own collection of statues!

We're proposing Don then John ...with more to come in future

Don's statue base will also include recognition of the whole team's achievement in 1969

John's will celebrate his record-breaking dedication to Swindon Town FC



Introducing Alan Beattie Herriot – [www.alanherriot.co.uk](http://www.alanherriot.co.uk)  
Initial discussions started in October 2015



Various Military Statues



Various Boxing Statues



Robert Louis Stevenson as a boy, commissioned by the Colinton Community Conservation Trust





## Initial Artist's Brief

- Sculpt a 115% statue, cast in bronze of one of Swindon Town FCs' greatest players, Don Rogers
- The statue to be mounted on a suitable plinth with appropriate inscriptions celebrating the historic Swindon Town team who defeated Arsenal 3-1 at Wembley in 1969 (bronze plaque, sand blasted & hand cut lettering)
- Statue to be elevated using stone base plinth or solid cut rock (Granite) or a brick construction.
- A preferred design might be something in stainless steel, seen as being more contemporary. Whichever is finally decided upon, an adequate amount should be allotted to this.

## Other Notes

- Statue to be illuminated at night, so ground lighting must also be budgeted for along with finishing landscape work around the statue.
- Labour costs for grounds preparation work can be obstructive or restrictive and the use of skilled volunteers from our fan base may help to keep costs down and serve to involve you as the fans directly.
- Decommissioning / re-siting costs may need to be considered if the original placement site changes



# ARTIST'S IMPRESSION & SINGLE STATUE COSTS



Statue Costs	Casting into bronze (Edinburgh Foundry)	Armature	Delivery and Installation	Artist Fee	Total (excl. VAT)
100% (1850mm high)	£22,500	£1,000	TBC	£18,500	£42,000
115% (2070mm high)	£30,000	£2,250	TBC	£20,000	£52,250
125% (2250mm high)	£40,000	£3,500	TBC	£28,000	£71,500
150% (2750mm high)	£60,000	£5,000	TBC	£39,000	£104,000



## **When would the statue be ready?**

- It would be reasonable to expect a finished statue by March 2023 if commissioned by mid-April 2022.
- Based on current membership support through monthly donations - and if the membership agrees - we could commission the Don Rogers statue immediately and commission the John Trollope statue in December 2022.

## **The Process starts with an Initial Membership Consultation / Survey (check your inbox later)**

- Are you supportive of statues at the County Ground?
- Are you supportive of the proposed approach? Don, then John, ...then more in the future?
- Are you supportive of us placing an initial order for the Don Rogers / 1969 commemorative statue?
- What pose would be best? With the Trophy or in action?
- Can you help with the eventual siting of the statue? – skilled labour for base, lighting etc
- Where do you think the statue(s) should be sited?
- Any other comments?



**Once the order is placed, the Artist's method is as follows:**

- Alan would produce a third life size maquette in clay. Any minor changes can be made at this stage.
- Once approved the maquette can be cast into cold cast bronze (GRP) and referred to when scaling up.
- The maquette can also be used in promotional publicity and visuals to assist with planning applications.
- Throughout the modelling of the full-scale sculpture, we can view progress before final sign-off of the clay model.
- From this point on the foundry take over.
- Alan has a working association with Powderhall Foundry in Edinburgh that has spanned the last twenty-five years.
- The foundry assumes responsibility for the sculpture until it is safely installed on site.
- A skilled team would accompany the statue and coordinate all work.
- In the rare event of something going wrong, all appropriate insurances are held by the foundry



## **Additional commercial benefits to Swindon Town Football Club**

- Limited editions of the maquette can be manufactured at various scales by 3D scanning and 3D printing.
- Cold cast, pewter or hot bronze versions varying in price, can be offered.
- A range of marketable items can be produced e.g., fridge magnets, keyrings, small bas-relief panels, t-shirts etc.

## **Quick Summary**

- The statue consultation survey will hit your email inbox today
- Please consider supporting this idea, any additional suggestions or feedback also appreciated
- If we go ahead, further consultations will follow around design and placement
- This is something for all supporters, we want everyone to feel involved and part of this exciting project



**A seven-year project so far but we are now closer than ever before!**

**Here's a quick recap on recent events regarding the County Ground acquisition:**

Initial valuation of £2.2m agreed by SBC and Joint Venture confirmed at press conference in March 2019

Off-the-field issues and change of ownership at Swindon Town Football Club

Due to time passing and other land sales in the region, an updated valuation was required to ensure best value for the local taxpayers.

## 2022 Timeline

- Swindon Borough Council Cabinet met on Wednesday 16th March 2022 and approved £2.3m sale
- Swindon Borough Council Scrutiny meeting approved on Monday 21<sup>st</sup> March
- Six-week moratorium period, as part of the Asset of Community Value process
- Sale to complete later in 2022, when new website will be launched for supporter shares

## Banking

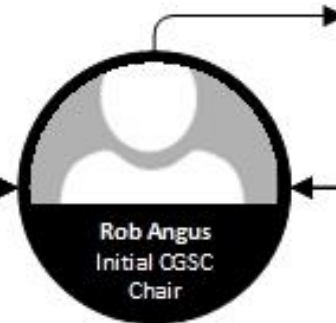
- The County Ground Stadium Custodians Ltd account has now been opened at Metro Bank in Swindon

## Funding

- We are working through final stages with Nigel Eady trust, who are committed to funding this purchase
- Two Eady Trustees will be appointed onto the board of The County Ground Stadium Custodians Ltd
- Should the Eady Trust funding not come through for whatever reason, Clem Morfuni will fund the entire purchase, covering both club and supporter costs and with payback via the annual rent and other payments
- Supporters will contribute to the upkeep of the stadium through an annual donation of circa £19.69 which will rise with inflation over time, we hope to attract many thousands of shareholders



STFC and STCM take it in turns to appoint the JV Chair.  
The role is a minimum one year term and is elected annually.  
Responsibilities include maintaining progress against the business plan, publishing accounts and holding public reviews, along with comms to shareholders, community and media.



**STCM Representatives**

Two Shareholder representatives elected every March at Swindon Town Community Mutual (STCM) AGM. Eady Trust representative included, as they are providing funding. STCM Representatives authorised to approve decisions up to £25k in value and decisions exceeding this are put to shareholder vote.



**Swindon Town FC Representatives**

Two representatives from Swindon Town FC (STFC) and one representative from the Eady Trust, who are providing funding.



**Advisory Board**

STFC initiated monthly meetings with representatives covering all supporter groups. This fully transparent meeting discusses club finances and issues in a collaborative manner and detailed minutes are published to all supporters. This forum also discusses ideas on County Ground improvements and encourages feedback and ideas from the STFC fanbase.



**STCM Shareholder Representatives**

Can be any existing STCM shareholder, nominated and democratically elected by community shareholders.



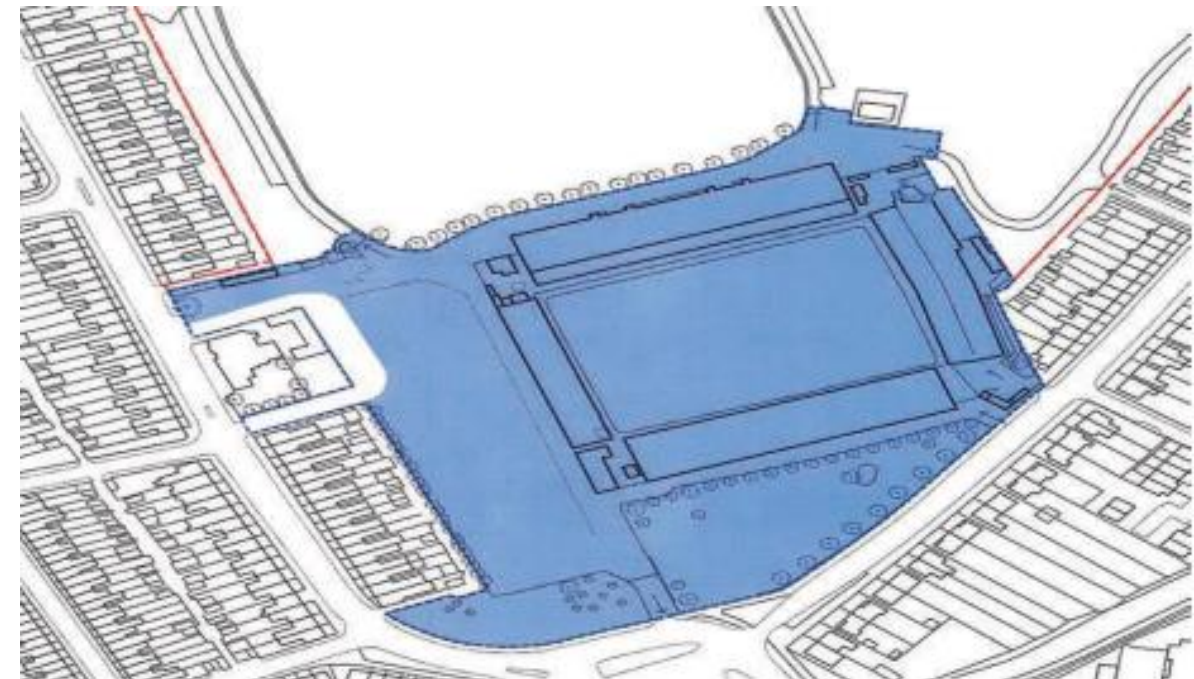
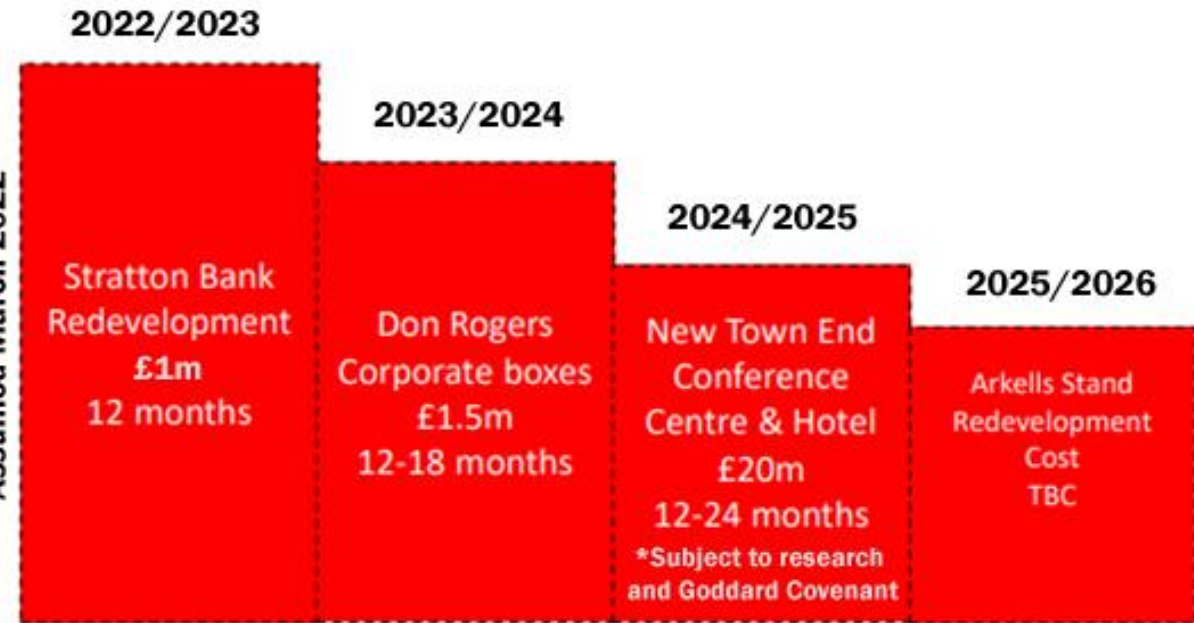




# DRAFT COUNTY GROUND VISION EXAMPLE



Completion of Freehold Purchase Assumed March 2022



## **Why is it a good idea for the JV to own the stadium?**

- Every penny of revenue will be invested back into the club and the stadium.
- Protects the County Ground – issues at Coventry, Northampton, Oxford, Darlington and more.
- Every Town fan has the chance to own a share and a vote on future decisions.

## **I don't like football! Why don't the council just put it up for sale to the highest bidder?**

- The Council would have the first option to buy it back.
- We are taxpayers ourselves and from the local community.
- We will match an appropriate independent valuation and work hard to improve the area for the good of the whole Town.
- The land has covenants on it that restrict its main use to sporting activities, so the football club is the only realistic purchaser.

## **If the JV owns the land, does it also own the Stadium (i.e., the stands / pitch etc) or just the land?**

- On the existing lease terms, the property covers three parcels of land together with the buildings and structures, namely The County Ground Football Ground and the ticket and sales offices. Any stands and buildings that were constructed after 1988 would have required the Landlord's consent and usually this is documented by way of a licence to alter.
- This is not a public document (i.e., not registered at the Land Registry). The professional understanding and opinion always would be that any building or structure that is built on a Landlord's land would be retained by the Landlord.

## **Does it include the cricket ground and pavilion, and the extension too?**

- As above, we would be buying the land and the stadium buildings, the adjacent land facing out onto the Magic Roundabout, and the car park. The Cricket Ground, Community Foundation and Athletics facilities are not included.

## Why is there an annual fee for shareholders?

The two legal entities owning 'The County Ground Stadium Custodians Ltd' Joint Venture (JV) will be:

- **SWINDON TOWN COMMUNITY MUTUAL LIMITED (STCM)** - fans group entity representing fans 50% stake
- **SWINDON TOWN FOOTBALL COMPANY LIMITED (STFC)** - entity representing the football club, holding other 50% stake

Swindon Town Community Mutual Ltd is the TrustSTFC limited company vehicle.

Upon completion, a new TrustSTFC website will be launched offering two levels of membership:

**County Ground Share membership**, priced at £19.69 annually and collected as a single fee, once a year.

- £1 of this buys you a share in Swindon Town Community Mutual Ltd and therefore a share in the County Ground
- The remaining £18.69 is your donation toward stadium maintenance and improvements

**Trust Legends membership**, this covers all current members who contribute over £5 a month (however we hope to attract more).

- £1 of this buys you a share in Swindon Town Community Mutual Ltd and therefore a share in the County Ground
- £18.69 of your annual donation will go towards County Ground maintenance and improvements.
- The remainder will go toward other Trust activities and running costs, e.g., NextGen, Fan Engagement, Trust Legends rewards etc.

**All existing members at the time of completion will become founding County Ground shareholders for the current financial year** (this includes any 'Red' level members paying between £1 a month and £4 a month) and electronic shares will be dispatched annually.

If you were to cancel your membership of the Trust at any time, you would no longer own a share in the County Ground.

This approach ensures that for the many decades to come, we will have an active and engaged/voting ownership for the supporters' stake in the stadium. Future generations can also get involved and have their say in continued developments and improvements.

The annual fee will ensure that the County Ground stadium continues to prosper in future times, and we expect to continuously grow the membership through positive and collaborative campaigns with STFC and in doing so raise the profile of Swindon Town throughout the country.



**SWINDON TOWN  
JOINT VENTURE**  
THE COUNTY GROUND  
STADIUM CUSTODIANS LTD



**A BRIGHT FUTURE**

**The County Ground Stadium Custodians  
Joint Venture is a fantastic supporter and  
community proposal.**

**This purchase will:**

- Ensure the future legacy of the County Ground
- Unlock investment and development of the football stadium
- Enable investment and development of the area around the stadium, supporting rejuvenation of Swindon Town Centre





**ONWARDS & UPWARDS**  
Let's Work Together

**ANY QUESTIONS?**

**Q & A**





ONWARDS & UPWARDS  
Let's Work Together

GET IN TOUCH



[truststfc.tv/contact-us](mailto:truststfc.tv/contact-us)



[truststfc.tv](http://truststfc.tv)



[@TrustSTFC](https://twitter.com/TrustSTFC)



[facebook.com/truststfc](https://facebook.com/truststfc)



[Swindon Town Supporters' Trust](https://www.youtube.com/SwindonTownSupportersTrust)